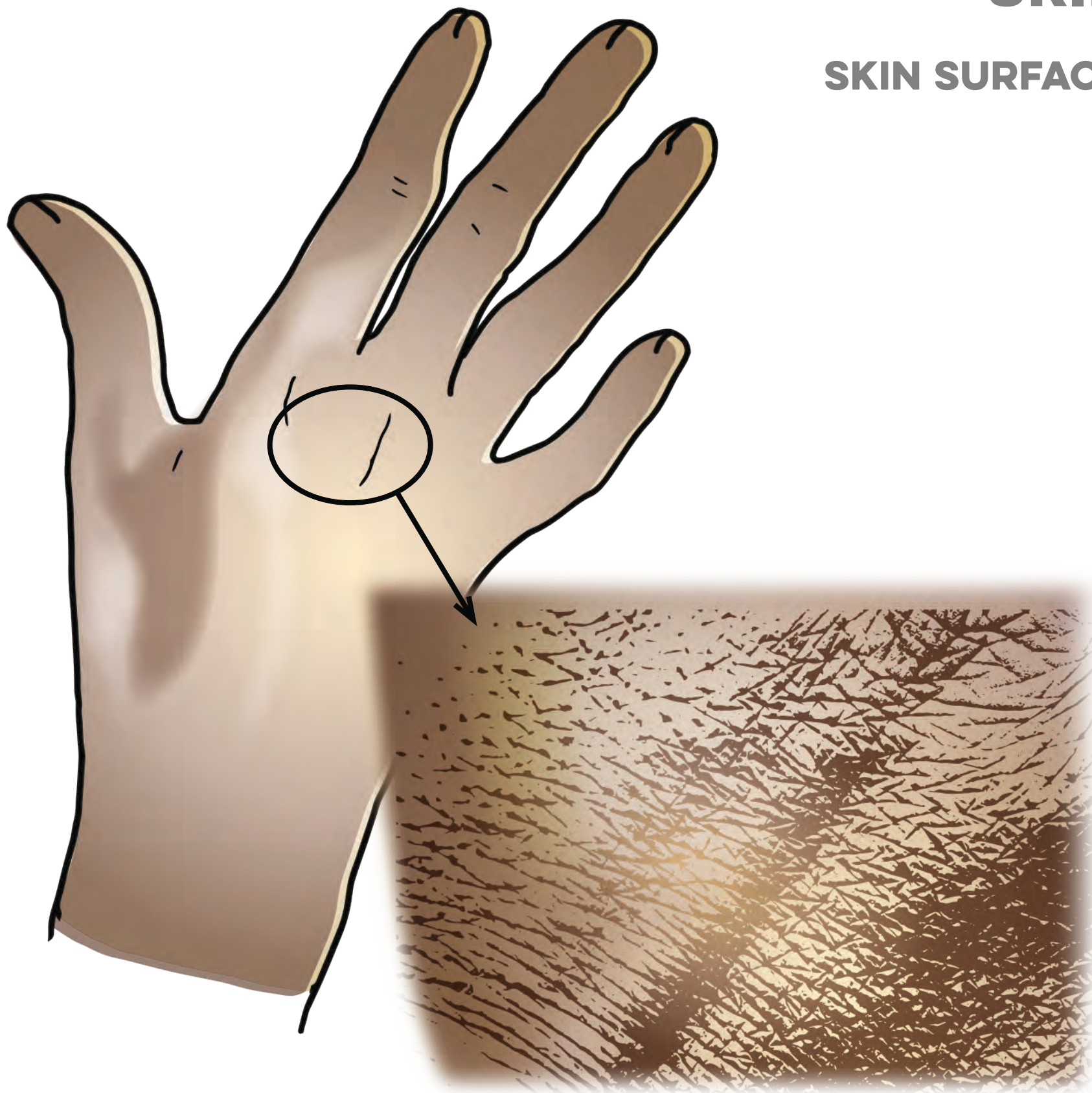


# SKIN

## SKIN SURFACE

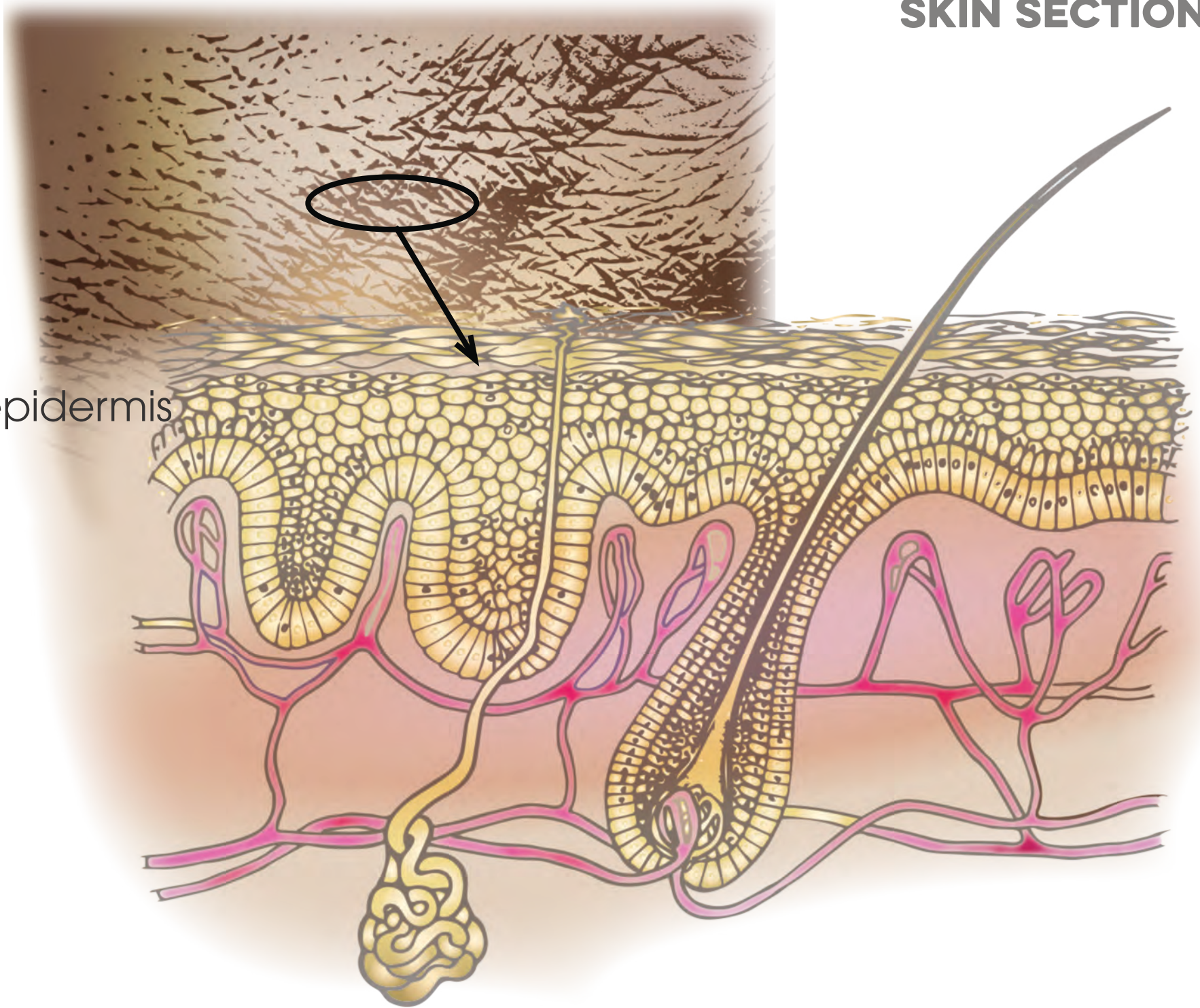




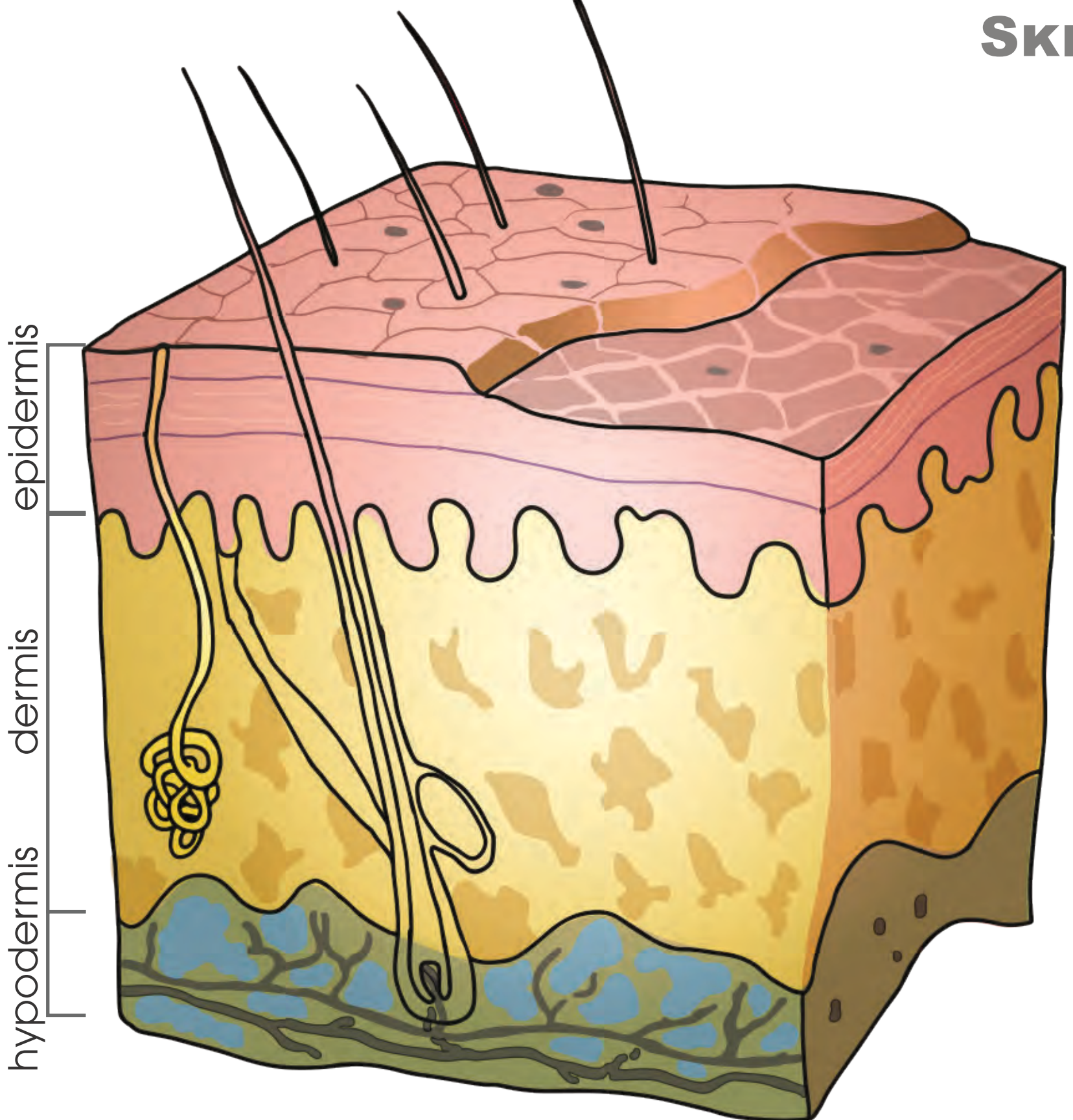
# SKIN

## SKIN SECTION

epidermis



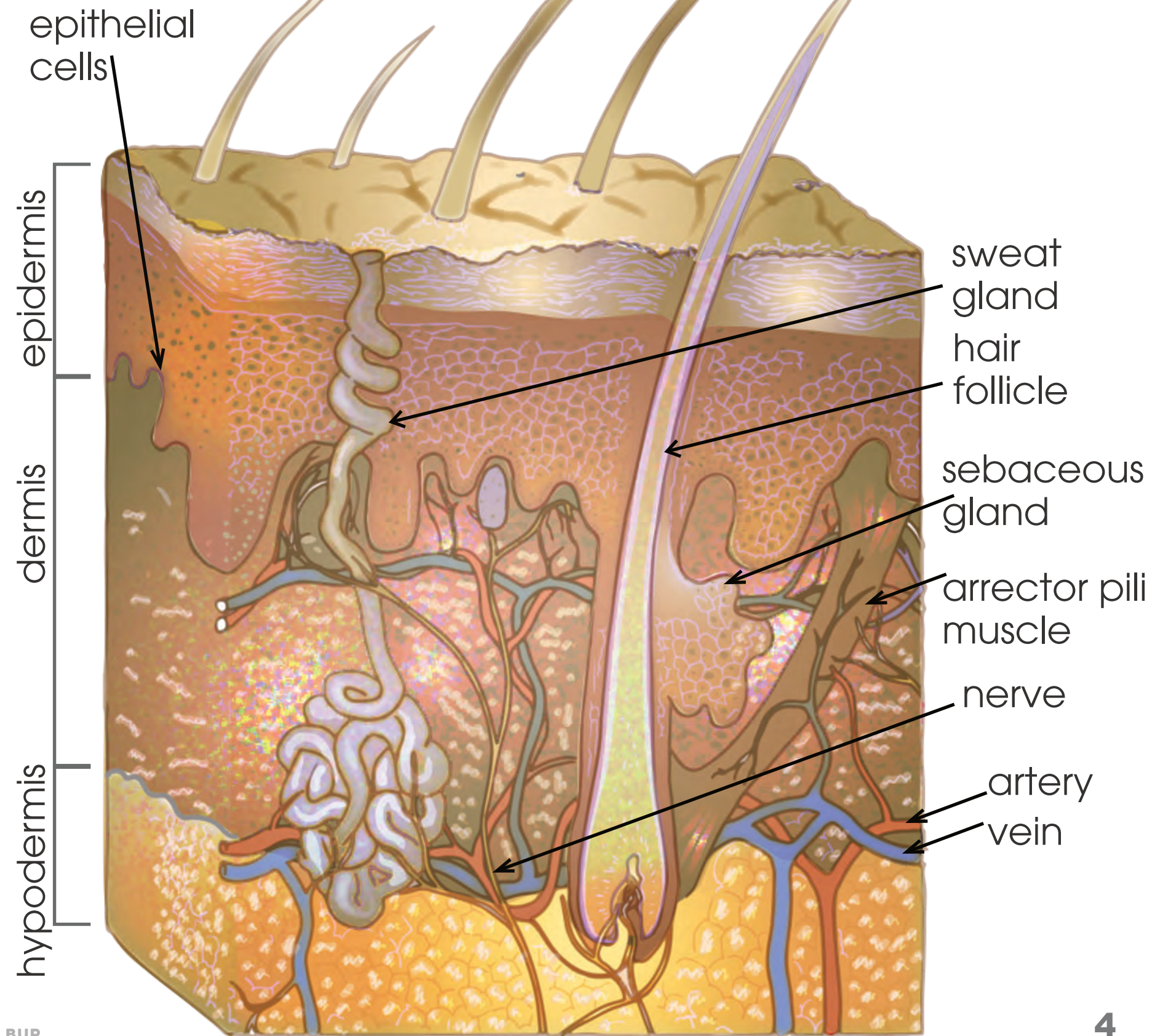




thickness: epidermis = 0.3 - 1.5 mm; dermis = 1 - 4 mm



# SKIN





# SKIN

## EPITHELIAL CELLS

epidermis

dermis

fibroblast

melanocyte

keratinocyte

epithelial cells have the potential to regenerate

